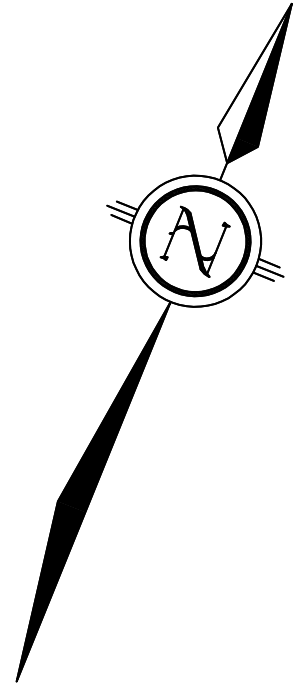


SCHEDULE				
PART	LOT	CONCESSION	PIN	AREA
1	PART OF LOT 8	11	PART OF PIN 48098-0334 (LT)	2.023 Ha.

PLAN 35R-27089
 Received and deposited
April 6th, 2023
Mary Beth Ouellette
 Representative for the
 Land Registrar for the
 Land Titles Division of
 Muskoka (No.35)



**PLAN OF SURVEY OF
 PART OF LOT 8, CONCESSION 11
 GEOGRAPHIC TOWNSHIP OF BRUNEL
 NOW IN THE TOWN OF HUNTSVILLE
 DISTRICT MUNICIPALITY OF MUSKOKA**

TULLOCH GEOMATICS INC., O.L.S.
 2023



SCALE 1 : 1000

THE INTENDED PLOT SIZE OF THIS PLAN IS 711mm IN WIDTH BY 610mm IN HEIGHT
 WHEN PLOTTED AT A SCALE OF 1:1000.

BEARING NOTE:

BEARINGS ARE UTM GRID AND ARE DERIVED FROM OBSERVED REFERENCE POINTS ORP A AND ORP B BY BASE AND ROVER REAL TIME NETWORK (RTN) GNSS OBSERVATIONS, UTM ZONE 17 (81°00'W LONGITUDE) NAD83(CSRS)(2010.0)

METRIC:

DISTANCES AND COORDINATES SHOWN ON THIS PLAN ARE IN METRES AND CAN BE CONVERTED TO FEET BY DIVIDING BY 0.3048.

GROUND DISTANCES SHOWN HEREON CAN BE CONVERTED TO UTM GRID BY MULTIPLYING BY A COMBINED SCALE FACTOR OF 0.9997929.

CONVERGENCE NOTE:

A CONVERGENCE (ROTATION) FACTOR OF 1°14'40" COUNTER CLOCKWISE HAS BEEN APPLIED TO THE ASTRONOMIC BEARINGS OF UNDERLYING PLANS 35R-19109, 35R-17462 AND 35R-19948 TO ACCOUNT FOR DIFFERENT REFERENCE MERIDIANS.

LEGEND:

- DENOTES SURVEY MONUMENT FOUND
- DENOTES SURVEY MONUMENT SET
- SIB DENOTES STANDARD IRON BAR 0.025 x 0.025 x 1.22
- SSIB DENOTES SHORT STANDARD IRON BAR 0.025 x 0.025 x 0.61
- RP DENOTES ROCK POST
- WIT DENOTES WITNESS MONUMENT
- M DENOTES MEASURED
- S DENOTES SET
- ORP DENOTES OBSERVED REFERENCE POINT
- NTS DENOTES NOTE TO SCALE
- CF DENOTES CALCULATED FROM
- C&J DENOTES COOTE, HILEY & JEMMETT LTD.
- P1 DENOTES PLAN 35R-19109
- P2 DENOTES PLAN 35R-17462
- P3 DENOTES PLAN 35R-19948

INTEGRATION COORDINATE TABLE		
OBSERVED REFERENCE POINTS (ORP'S): UTM ZONE 17 (81°00'W LONGITUDE) NAD83(CSRS)(2010.0) COORDINATES TO URBAN ACCURACY PER SECTION 14(2) OR 0.REG 216/10.		
ORP	NORTHING	EASTING
A	5015428.160	639278.327
B	5015507.202	639472.938
COORDINATES CANNOT, IN THEMSELVES, BE USED TO RE-ESTABLISH THE CORNERS OR BOUNDARIES SHOWN ON THIS PLAN.		

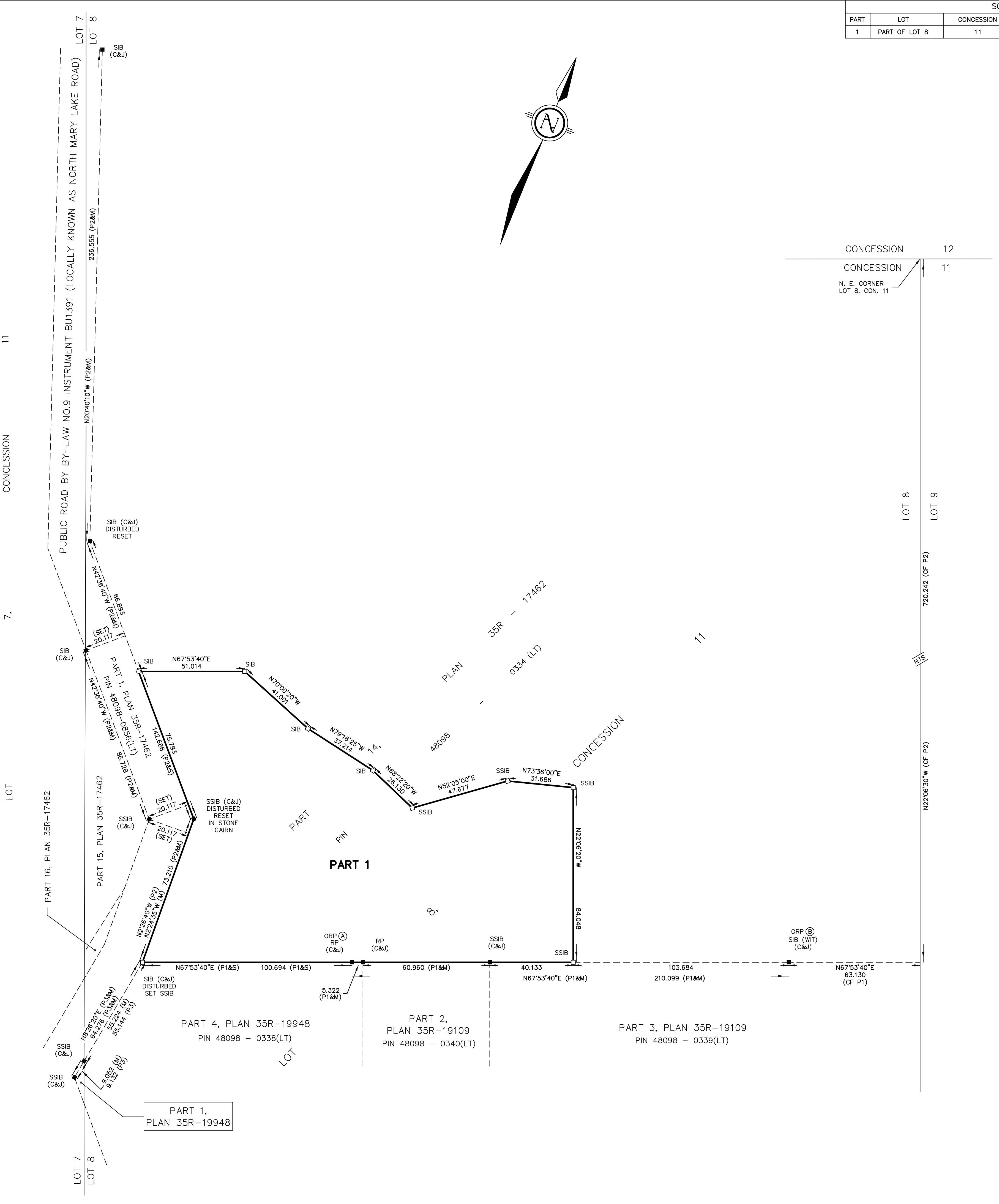
SURVEYOR'S CERTIFICATE

I CERTIFY THAT:
 (1) THIS SURVEY AND PLAN ARE CORRECT AND IN ACCORDANCE WITH THE SURVEYS ACT, THE SURVEYORS ACT, AND THE LAND TITLES ACT AND THE REGULATIONS MADE UNDER THEM.
 (2) THE SURVEY WAS COMPLETED ON THE 27th DAY OF FEBRUARY, 2023.

MARCH 22, 2023
 DATE

Jason Kelsall
 JASON KELSALL
 ONTARIO LAND SURVEYOR

THIS PLAN OF SURVEY RELATES TO AOLS PLAN SUBMISSION FORM NUMBER V-48753.



	TULLOCH GEOMATICS INC. 80 MAIN ST. W. HUNTSVILLE, ON P1H 1W9	T. 705 789.7851 F. 705 789.7891 877 535.0558
	huntville@tulloch.co DRAWN BY: RJN FILE: 213344	