

I REQUIRE THIS PLAN TO BE DEPOSITED UNDER THE REGISTRY ACT.

**PLAN 35R-16540**

RECEIVED AND DEPOSITED

DATE: 22 Mar 16, 1996 DATE: APRIL 16, 1996

*Robert D. Heggie* *Mary C. Chassey*  
 ROBERT D. HEGGIE O.L.S. ASST. LAND REGISTRAR FOR THE REGISTRY DIVISION OF MUSKOKA (№ 35)

PARTS 1, 2, 3 & 4 - PART OF LOT 20, CON. 5 - PART OF INST. 43004  
 PART 5 - PART OF LOT 20, CON. 5 - PART INST. 252 (BY-LAW 62)  
 PART 6 - PART OF LOT 20, CON. 5 - PART INST. 255203 (BY-LAW 91-50)  
 PART 7 - PART OF LOT 20, CON. 5 - PART INST. 327 (BY-LAW 114)

**CAUTION: THIS PLAN IS NOT A PLAN OF SUBDIVISION WITHIN THE MEANING OF THE PLANNING ACT.**

**PLAN OF SURVEY OF**  
**PART OF LOT 20, CONCESSION 5**  
 TOWNSHIP OF CARDWELL  
 NOW IN THE  
**TOWNSHIP OF MUSKOKA LAKES**  
 DISTRICT MUNICIPALITY OF MUSKOKA  
 SCALE: 1 IN. = 100 FT.  
**ROBERT D. HEGGIE O.L.S. 1995**

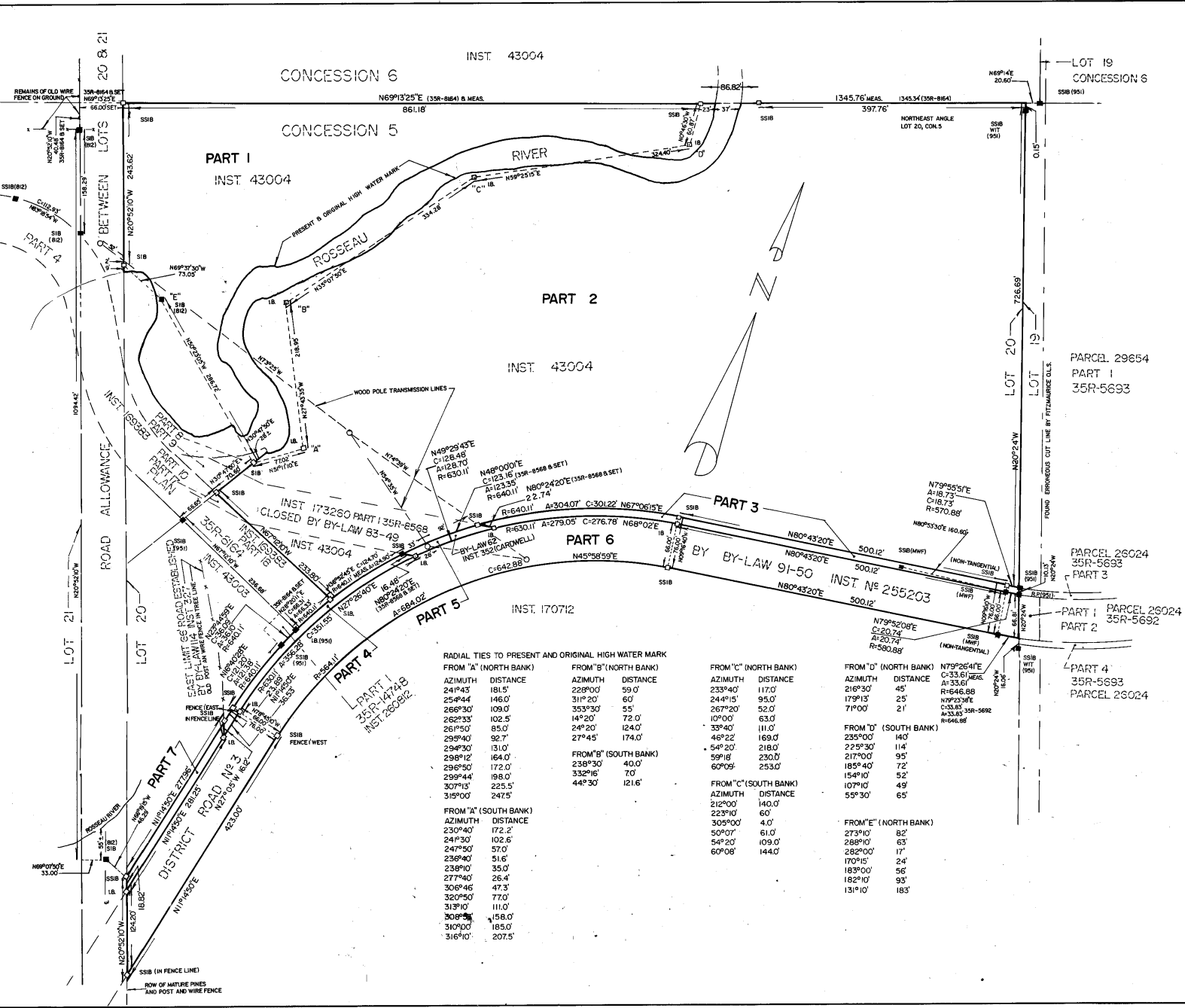
**SURVEYOR'S CERTIFICATE**  
 I CERTIFY THAT:  
 1. THIS SURVEY AND PLAN ARE CORRECT AND IN ACCORDANCE WITH THE SURVEYS ACT AND THE REGISTRY ACT AND THE REGULATIONS MADE THEREUNDER;  
 2. THE SURVEY WAS COMPLETED ON THE 16<sup>TH</sup> DAY OF MARCH 1996

Mary C. Chassey Robert D. Heggie  
 PORT SYDNEY ROBERT D. HEGGIE  
 ONTARIO LAND SURVEYOR

NOTE: BEARINGS HEREON ARE ASTROMERIC AND ARE REFERRED TO THE N20°24'W OF THE EASTERLY LIMIT OF LOT 20, CONCESSION 5, IN ACCORDANCE WITH PART 1, PLAN 35R-5693.

LEGEND: □ DENOTES MONUMENT PLANTED  
 ■ DENOTES MONUMENT FOUND  
 SSB DENOTES STANDARD IRON BAR  
 IB DENOTES SHORT STANDARD IRON BAR  
 R.P. DENOTES ROCK POST

NOTE: THE LIMIT OF THE ROSSEAU RIVER AS SHOWN HEREON IS THE BEST AVAILABLE EVIDENCE OF THE ORIGINAL HIGH WATER MARK OR WATER'S EDGE EXISTING AT THE TIME OF THE ORIGINAL SURVEY OF THE TOWNSHIP OF CARDWELL.



RADIAL TIES TO PRESENT AND ORIGINAL HIGH WATER MARK

| FROM "A" (NORTH BANK) |          | FROM "B" (NORTH BANK) |          | FROM "C" (NORTH BANK) |          | FROM "D" (NORTH BANK) |          | FROM "E" (NORTH BANK) |          |
|-----------------------|----------|-----------------------|----------|-----------------------|----------|-----------------------|----------|-----------------------|----------|
| AZIMUTH               | DISTANCE | AZIMUTH               | DISTANCE | AZIMUTH               | DISTANCE | AZIMUTH               | DISTANCE | AZIMUTH               | DISTANCE |
| 241°43'               | 181.5'   | 229°00'               | 59.0'    | 233°40'               | 117.0'   | 216°30'               | 45'      | 273°10'               | 82'      |
| 254°44'               | 146.0'   | 311°20'               | 60'      | 244°15'               | 95.0'    | 179°13'               | 25'      | 288°10'               | 63'      |
| 266°30'               | 109.0'   | 353°30'               | 55'      | 267°20'               | 52.0'    | 71°00'                | 21'      | 282°00'               | 17'      |
| 262°33'               | 102.5'   | 14°20'                | 72.0'    | 10°00'                | 63.0'    |                       |          | 170°15'               | 24'      |
| 261°50'               | 85.0'    | 24°20'                | 124.0'   | 33°40'                | 111.0'   |                       |          | 183°00'               | 56'      |
| 299°40'               | 92.7'    | 27°45'                | 174.0'   | 46°22'                | 169.0'   |                       |          | 182°10'               | 93'      |
| 294°30'               | 131.0'   |                       |          | 54°20'                | 218.0'   |                       |          | 131°10'               | 183'     |
| 298°12'               | 164.0'   |                       |          | 59°18'                | 230.0'   |                       |          |                       |          |
| 296°50'               | 172.0'   |                       |          | 60°09'                | 253.0'   |                       |          |                       |          |
| 299°44'               | 198.0'   |                       |          |                       |          |                       |          |                       |          |
| 307°13'               | 225.3'   |                       |          |                       |          |                       |          |                       |          |
| 315°00'               | 247.5'   |                       |          |                       |          |                       |          |                       |          |
|                       |          |                       |          |                       |          |                       |          |                       |          |
| FROM "A" (SOUTH BANK) |          | FROM "B" (SOUTH BANK) |          | FROM "C" (SOUTH BANK) |          | FROM "D" (SOUTH BANK) |          | FROM "E" (SOUTH BANK) |          |
| AZIMUTH               | DISTANCE | AZIMUTH               | DISTANCE | AZIMUTH               | DISTANCE | AZIMUTH               | DISTANCE | AZIMUTH               | DISTANCE |
| 230°40'               | 172.2'   | 238°30'               | 40.0'    | 212°00'               | 140.0'   | 235°00'               | 140'     |                       |          |
| 243°30'               | 102.6'   | 332°16'               | 70'      | 223°10'               | 60'      | 225°30'               | 114'     |                       |          |
| 247°50'               | 57.0'    | 44°30'                | 121.6'   | 309°00'               | 4.0'     | 217°00'               | 95'      |                       |          |
| 238°40'               | 51.6'    |                       |          | 50°07'                | 61.0'    | 185°40'               | 72'      |                       |          |
| 238°10'               | 35.0'    |                       |          | 54°20'                | 109.0'   | 154°10'               | 52'      |                       |          |
| 277°40'               | 26.4'    |                       |          | 60°08'                | 144.0'   | 107°10'               | 49'      |                       |          |
| 306°46'               | 47.3'    |                       |          |                       |          | 59°30'                | 65'      |                       |          |
| 320°50'               | 77.0'    |                       |          |                       |          |                       |          |                       |          |
| 319°10'               | 111.0'   |                       |          |                       |          |                       |          |                       |          |
| 308°50'               | 158.0'   |                       |          |                       |          |                       |          |                       |          |
| 310°00'               | 185.0'   |                       |          |                       |          |                       |          |                       |          |
| 316°10'               | 207.5'   |                       |          |                       |          |                       |          |                       |          |

16540