

PLAN AND FIELD NOTES OF SUBDIVISION OF PARTS OF LOTS 2 & 3, CONCESSION 9 TOWNSHIP OF BRUNEL DISTRICT OF MUSKOGEE

SCALE — 100 FEET TO AN INCH
JOHN E. JACKSON O.L.S. 1969.

LEGEND—
 BOUNDARY AND DIVISION FROM THE EASTERN LIMIT OF LOT 5, CONCESSION 9, WHICH HAS AN ASSIGNED BEARING OF $S 82^{\circ}10'30'' W$ AS SHOWN ON PLAN 80-180 (TOWNSHIP OF BRUNEL)
 DISTRICT AND AS RECTANGULAR SURVEY
 1 5/8" DIAMETER IRON BAR 1" x 1" x 1/4"
 2 3/4" DIAMETER IRON BAR 1" x 1" x 1/4"
 3 3/4" DIAMETER IRON BAR 1" x 1" x 1/4"
 4 3/4" DIAMETER IRON BAR 1" x 1" x 1/4"
 5 3/4" DIAMETER IRON BAR 1" x 1" x 1/4"
 6 3/4" DIAMETER IRON BAR 1" x 1" x 1/4"
 7 3/4" DIAMETER IRON BAR 1" x 1" x 1/4"
 8 3/4" DIAMETER IRON BAR 1" x 1" x 1/4"
 9 3/4" DIAMETER IRON BAR 1" x 1" x 1/4"
 10 3/4" DIAMETER IRON BAR 1" x 1" x 1/4"
 11 3/4" DIAMETER IRON BAR 1" x 1" x 1/4"
 12 3/4" DIAMETER IRON BAR 1" x 1" x 1/4"
 13 3/4" DIAMETER IRON BAR 1" x 1" x 1/4"
 14 3/4" DIAMETER IRON BAR 1" x 1" x 1/4"
 15 3/4" DIAMETER IRON BAR 1" x 1" x 1/4"
 16 3/4" DIAMETER IRON BAR 1" x 1" x 1/4"
 17 3/4" DIAMETER IRON BAR 1" x 1" x 1/4"
 18 3/4" DIAMETER IRON BAR 1" x 1" x 1/4"
 19 3/4" DIAMETER IRON BAR 1" x 1" x 1/4"
 20 3/4" DIAMETER IRON BAR 1" x 1" x 1/4"
 21 3/4" DIAMETER IRON BAR 1" x 1" x 1/4"
 22 3/4" DIAMETER IRON BAR 1" x 1" x 1/4"
 23 3/4" DIAMETER IRON BAR 1" x 1" x 1/4"
 24 3/4" DIAMETER IRON BAR 1" x 1" x 1/4"
 25 3/4" DIAMETER IRON BAR 1" x 1" x 1/4"
 26 3/4" DIAMETER IRON BAR 1" x 1" x 1/4"
 27 3/4" DIAMETER IRON BAR 1" x 1" x 1/4"
 28 3/4" DIAMETER IRON BAR 1" x 1" x 1/4"
 29 3/4" DIAMETER IRON BAR 1" x 1" x 1/4"
 30 3/4" DIAMETER IRON BAR 1" x 1" x 1/4"
 31 3/4" DIAMETER IRON BAR 1" x 1" x 1/4"
 32 3/4" DIAMETER IRON BAR 1" x 1" x 1/4"
 33 3/4" DIAMETER IRON BAR 1" x 1" x 1/4"
 34 3/4" DIAMETER IRON BAR 1" x 1" x 1/4"
 35 3/4" DIAMETER IRON BAR 1" x 1" x 1/4"
 36 3/4" DIAMETER IRON BAR 1" x 1" x 1/4"
 37 3/4" DIAMETER IRON BAR 1" x 1" x 1/4"
 38 3/4" DIAMETER IRON BAR 1" x 1" x 1/4"
 39 3/4" DIAMETER IRON BAR 1" x 1" x 1/4"
 40 3/4" DIAMETER IRON BAR 1" x 1" x 1/4"
 41 3/4" DIAMETER IRON BAR 1" x 1" x 1/4"
 42 3/4" DIAMETER IRON BAR 1" x 1" x 1/4"
 43 3/4" DIAMETER IRON BAR 1" x 1" x 1/4"
 44 3/4" DIAMETER IRON BAR 1" x 1" x 1/4"
 45 3/4" DIAMETER IRON BAR 1" x 1" x 1/4"
 46 3/4" DIAMETER IRON BAR 1" x 1" x 1/4"
 47 3/4" DIAMETER IRON BAR 1" x 1" x 1/4"
 48 3/4" DIAMETER IRON BAR 1" x 1" x 1/4"
 49 3/4" DIAMETER IRON BAR 1" x 1" x 1/4"
 50 3/4" DIAMETER IRON BAR 1" x 1" x 1/4"
 51 3/4" DIAMETER IRON BAR 1" x 1" x 1/4"
 52 3/4" DIAMETER IRON BAR 1" x 1" x 1/4"
 53 3/4" DIAMETER IRON BAR 1" x 1" x 1/4"
 54 3/4" DIAMETER IRON BAR 1" x 1" x 1/4"
 55 3/4" DIAMETER IRON BAR 1" x 1" x 1/4"
 56 3/4" DIAMETER IRON BAR 1" x 1" x 1/4"
 57 3/4" DIAMETER IRON BAR 1" x 1" x 1/4"
 58 3/4" DIAMETER IRON BAR 1" x 1" x 1/4"
 59 3/4" DIAMETER IRON BAR 1" x 1" x 1/4"
 60 3/4" DIAMETER IRON BAR 1" x 1" x 1/4"
 61 3/4" DIAMETER IRON BAR 1" x 1" x 1/4"
 62 3/4" DIAMETER IRON BAR 1" x 1" x 1/4"
 63 3/4" DIAMETER IRON BAR 1" x 1" x 1/4"
 64 3/4" DIAMETER IRON BAR 1" x 1" x 1/4"
 65 3/4" DIAMETER IRON BAR 1" x 1" x 1/4"
 66 3/4" DIAMETER IRON BAR 1" x 1" x 1/4"
 67 3/4" DIAMETER IRON BAR 1" x 1" x 1/4"
 68 3/4" DIAMETER IRON BAR 1" x 1" x 1/4"
 69 3/4" DIAMETER IRON BAR 1" x 1" x 1/4"
 70 3/4" DIAMETER IRON BAR 1" x 1" x 1/4"
 71 3/4" DIAMETER IRON BAR 1" x 1" x 1/4"
 72 3/4" DIAMETER IRON BAR 1" x 1" x 1/4"
 73 3/4" DIAMETER IRON BAR 1" x 1" x 1/4"
 74 3/4" DIAMETER IRON BAR 1" x 1" x 1/4"
 75 3/4" DIAMETER IRON BAR 1" x 1" x 1/4"
 76 3/4" DIAMETER IRON BAR 1" x 1" x 1/4"
 77 3/4" DIAMETER IRON BAR 1" x 1" x 1/4"
 78 3/4" DIAMETER IRON BAR 1" x 1" x 1/4"
 79 3/4" DIAMETER IRON BAR 1" x 1" x 1/4"
 80 3/4" DIAMETER IRON BAR 1" x 1" x 1/4"
 81 3/4" DIAMETER IRON BAR 1" x 1" x 1/4"
 82 3/4" DIAMETER IRON BAR 1" x 1" x 1/4"
 83 3/4" DIAMETER IRON BAR 1" x 1" x 1/4"
 84 3/4" DIAMETER IRON BAR 1" x 1" x 1/4"
 85 3/4" DIAMETER IRON BAR 1" x 1" x 1/4"
 86 3/4" DIAMETER IRON BAR 1" x 1" x 1/4"
 87 3/4" DIAMETER IRON BAR 1" x 1" x 1/4"
 88 3/4" DIAMETER IRON BAR 1" x 1" x 1/4"
 89 3/4" DIAMETER IRON BAR 1" x 1" x 1/4"
 90 3/4" DIAMETER IRON BAR 1" x 1" x 1/4"
 91 3/4" DIAMETER IRON BAR 1" x 1" x 1/4"
 92 3/4" DIAMETER IRON BAR 1" x 1" x 1/4"
 93 3/4" DIAMETER IRON BAR 1" x 1" x 1/4"
 94 3/4" DIAMETER IRON BAR 1" x 1" x 1/4"
 95 3/4" DIAMETER IRON BAR 1" x 1" x 1/4"
 96 3/4" DIAMETER IRON BAR 1" x 1" x 1/4"
 97 3/4" DIAMETER IRON BAR 1" x 1" x 1/4"
 98 3/4" DIAMETER IRON BAR 1" x 1" x 1/4"
 99 3/4" DIAMETER IRON BAR 1" x 1" x 1/4"
 100 3/4" DIAMETER IRON BAR 1" x 1" x 1/4"

SURVEYOR'S CERTIFICATE—

- 1 I HEREBY CERTIFY—
- 2 THAT THIS PLAN AND SURVEY ARE CORRECT AND IN ACCORDANCE WITH THE SURVEY ACT AND THE LAND TOLLER ACT AND THE REGULATIONS MADE THEREUNDER.
- 3 THAT I WAS PRESENT AT AND AM PERSONALLY RESPONSIBLE FOR THE SURVEY REPRESENTED BY THIS PLAN.
- 4 THAT THIS PLAN CONTAINS A TRUE COPY OF THE FIELD NOTES OF SURVEY.
- 5 THAT THE SURVEY WAS COMPLETED ON THE 30th DAY OF FEB, 1969.

FORWARDED BY
JOHN E. JACKSON O.L.S.

OWNER'S CERTIFICATE—

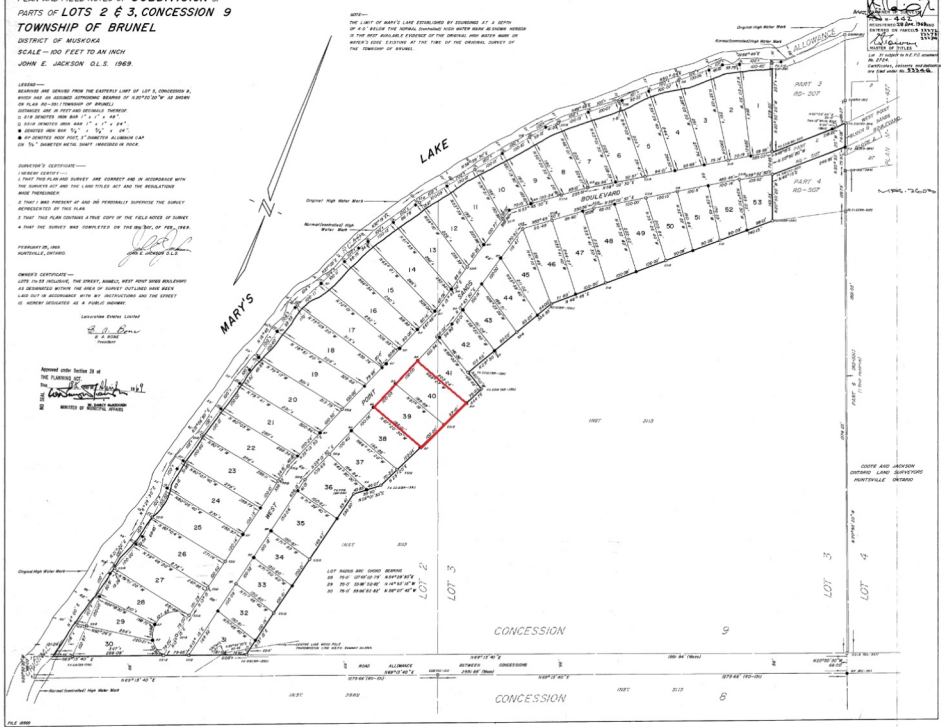
- 1 I HEREBY CERTIFY—
- 2 THAT I AM HOLDING THE STREET, ALLEYS, WALKS AND SIDE WALKS AS DESCRIBED WITHIN THE AREA OF SURVEY OUTLINED HAVE BEEN Laid OUT IN ACCORDANCE WITH MY INSTRUCTIONS AND THE STREET AND HIGHWAY ACTS AS A PUBLIC HIGHWAY.

LAWSONE ELLIOTT LAITNER
A. A. LAITNER
Professional

Approved under Section 23 of
THE SURVEY ACT
By
J. E. JACKSON
O.L.S.
MUNICIPAL DISTRICT OF MUSKOGEE

NOTE—
THE LIMIT OF MARY'S LAKE ESTABLISHED BY BOUNDARY BY A DEPTH OF 4' 0" BEING THE NORMAL SURFACE HIGH WATER MARK AS SHOWN HEREON IS THE BEST AVAILABLE EVIDENCE OF THE ORIGINAL HIGH WATER MARK IN WISCONSIN'S 1858 SURVEY AT THE TIME OF THE ORIGINAL SURVEY OF THE TOWNSHIP OF BRUNEL.

PLAN M-442
 1969 FEB 24, 1969
 CONCESSION 9
 TOWNSHIP OF BRUNEL
 DISTRICT OF MUSKOGEE
 100 FEET TO AN INCH
 PLAN M-442
 CONCESSION 9
 TOWNSHIP OF BRUNEL
 DISTRICT OF MUSKOGEE
 100 FEET TO AN INCH
 PLAN M-442



JOHN E. JACKSON
O.L.S.
MUNICIPAL DISTRICT OF MUSKOGEE

