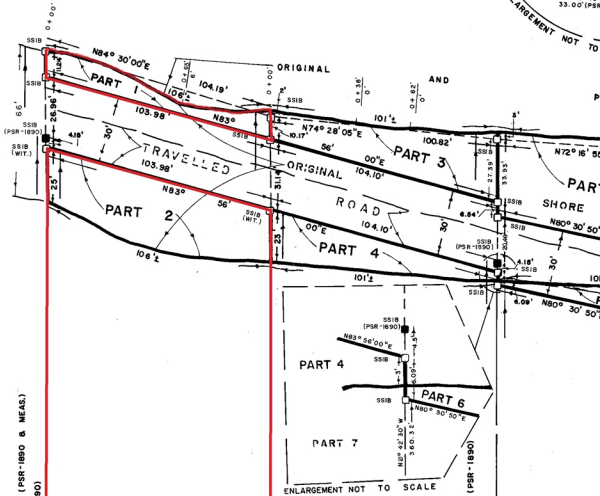


ENLARGEMENT NOT TO SCALE  
N 30° 51' 40"  
33.00' (PSR)



(PSR-1890 & MEAS.)  
462.1  
424.65' (PSR-1890)

N 21° 40' 40" W  
424.44' (MEAS.)  
420.25'

PART 5  
INST. No. 49460

436.1  
393.34'

N 21° 35' 40" W (PSR-1890 & SET)  
393.34'

PART 7  
INST. No. 53281

P S R

N 21° 44' 00" W (PSR-1890 & MEAS.)  
426.1 (MEAS.)  
370.56'

PART 8  
INST. No. 49

N 21° 42' 30" W  
370.56' (MEAS.)  
380.32'

100.04' (PSR-1890 & MEAS.)  
100.72' (PSR-1890 & MEAS.)  
100.3' (PSR-1890)

N 68° 53' 30" E